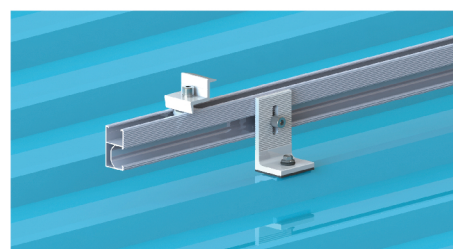
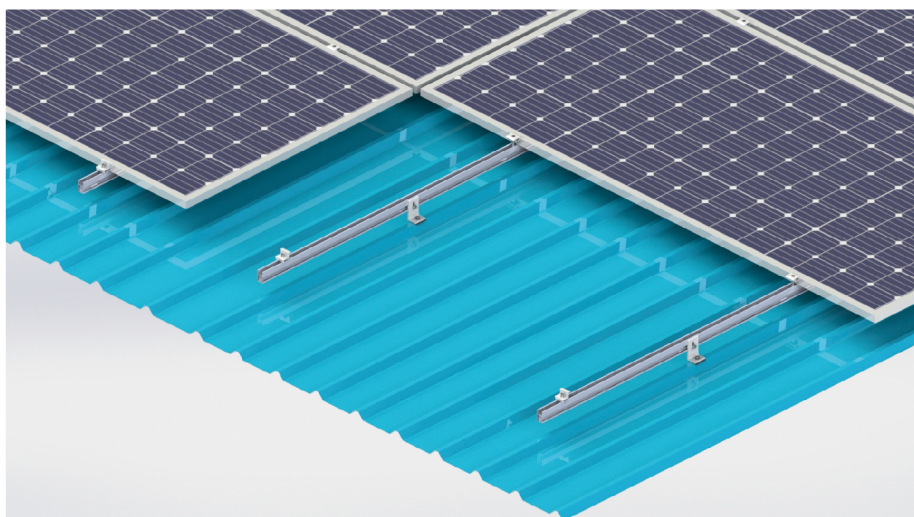


Rail + L-feet System



Description

Rail + L-feet Mounting System, engineered for superior performance, durability, and rapid installation on corrugated and trapezoidal metal sheet roofs.

Technical Parameters

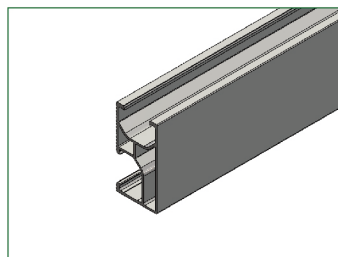
System Type	Rail + L-feet System	Design Standard	GB/T 5237; JIS C 8955:2017; EN 1990,EN 1991; AS/NZS 1170; DIN EN 1991
Application Scenarios	Metal Roof (Tin roof)	Certification	CE
Tilt Angle	same as the roof	Material	Aluminium (AL6005-T5), Stainless Steel
Wind Load	≤80m/s	Surface Treatment	Anodized (Aluminium)
Snow Load	≤150cm	Color	Silver, Black, or Customized
Applicable Module	Framed PV Module	Warranty	10 Years

Key Features & Advantages

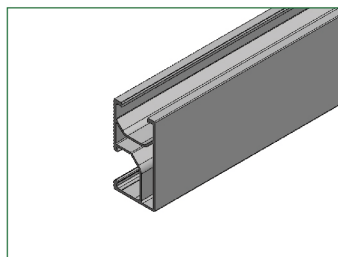
- (1) Strong & Simple Fixing: The L Feet are bolted directly onto the metal roof's main supports (purlins) through the roof sheets, it creates a very strong, direct, and simple connection.
- (2) Trusted Waterproofing: Each L Feet has a high-quality rubber seal at its base, reliably protecting your roof from leaks.
- (3) Proven Durability: Made from high-strength aluminum, it resists rust and corrosion for decades, matching the long life of your solar panels.
- (4) Cost-Effective Solution & Wide Compatibility: the design is simple and installation is quick, works on most common metal roof types. this system offers a very reliable and affordable way to mount solar panels on metal roofs.

Components

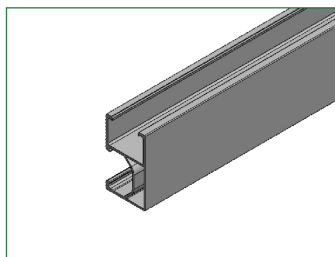
Rails & Rail Splice



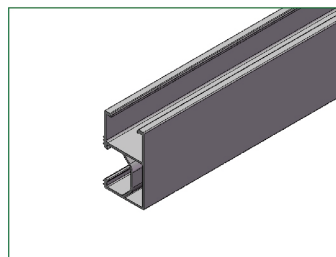
NS-AR



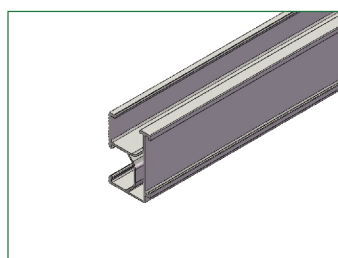
NS-AR2



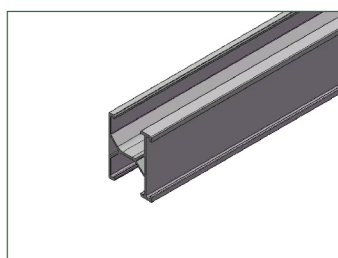
NS-AR3



NS-AR46



NS-BR



NS-HR

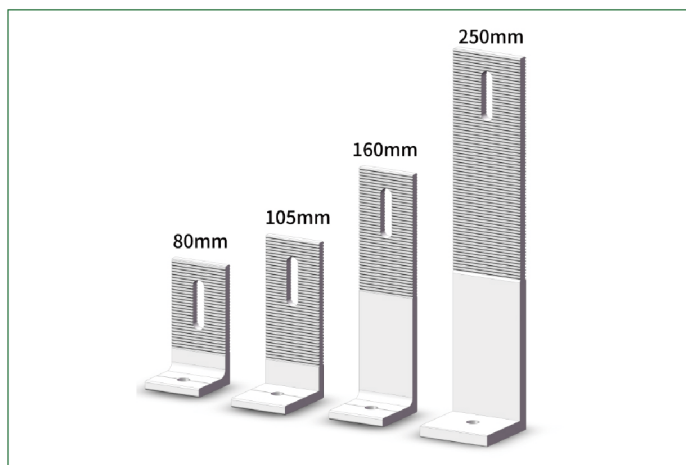


NS-AR-SP-140



NS-BR-SP-150

L-Feet



NS-RH-LD

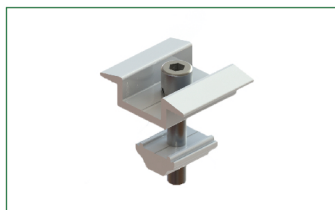
Panel Clamps



NS-IC-F



NS-EC01-F

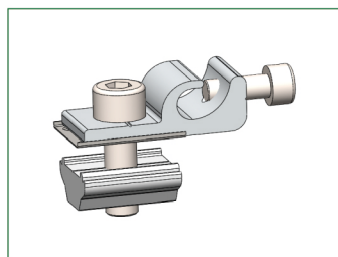


NS-KIC-F

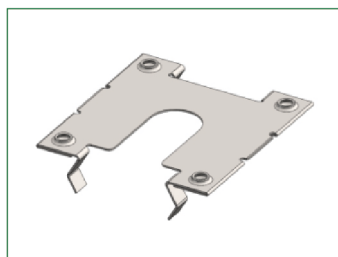


NS-KEC-F

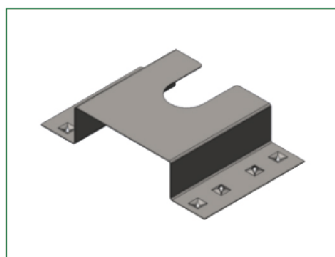
Other Accerories



NS-VR-GL



NS-VR-GC



NS-KR-GC



NS-CC-01